

# WALKABILITY ACTIONS IN MEXICO CITY

Mobility  
Secretariat  
of Mexico City



GOBIERNO DE LA  
CIUDAD DE MÉXICO



SECRETARÍA  
DE MOVILIDAD

# PEDESTRIAN MOBILITY CONTEXT



In the Metropolitan Area of the Valley of Mexico, over 5 million trips a day are made "only by walking", 41% of them are made within Mexico City (2,116,248 trips)

34

The average age of people who make trips by walking is 34 years



61.4% of walking trips in Mexico City are made by women and the main reason for travel is care activities (dropping off and picking up someone or going shopping)



The second main reason for traveling on foot is going to school. Children under 15 years of age represent 28% of trips in Mexico City and 32% of metropolitan trips

# INTEGRATED MOBILITY PROGRAM 2019 - 2024

**VISION:** Place people at the center of urban mobility policies, ensuring that mobility systems, programs and projects are aimed at increasing accessibility, reducing travel times and guaranteeing comfortable and safe trips for all people

## ● INTEGRATE

transportation systems

- walking
- cycling
- public transportation

## ● IMPROVE

infrastructure and  
services

- increase accessibility conditions
- reduce transfer times
- improve travel conditions

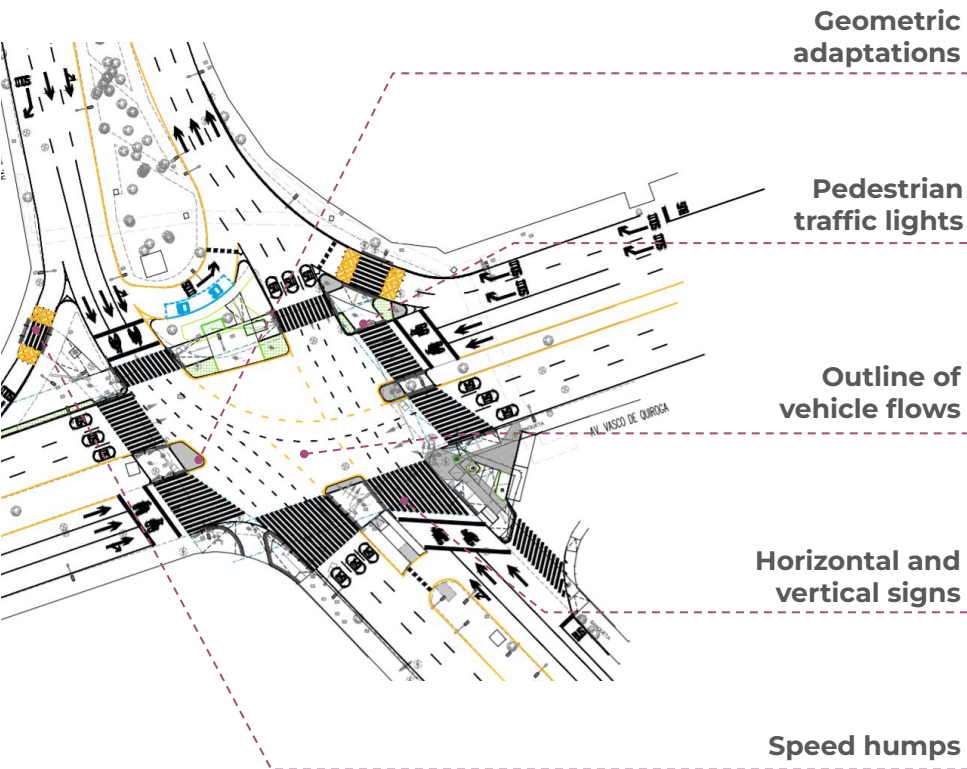
## ● PROTECT

vulnerable users

- inclusive
- dignified
- safe

# SAFE INTERSECTIONS

## GENERAL DESIGN CRITERIA



## EVALUATION

### Safe crosswalks - PHASE 1 (37 intersections)

	Apr 2018 - Mar 2019	Apr 2019 - Mar 2020	Variation (%)
Road traffic crashes	279	235	-16%
Victims	342	261	-24%
Run overs	81	68	-16%

### Safe crosswalks - PHASE 2 (42 intersections)

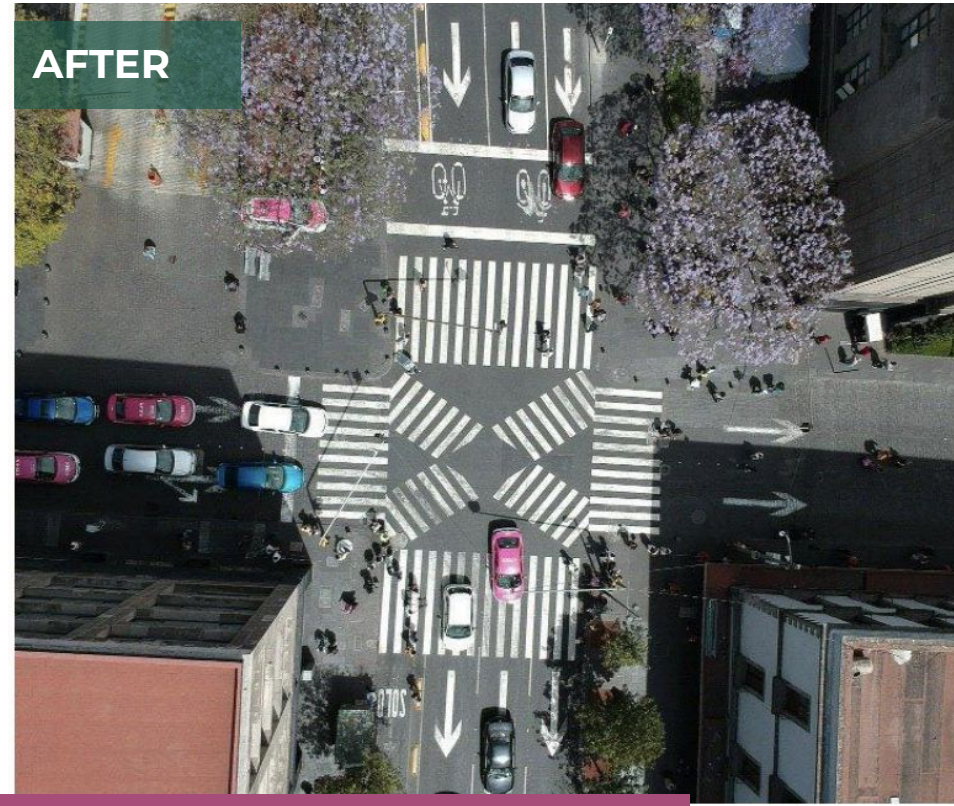
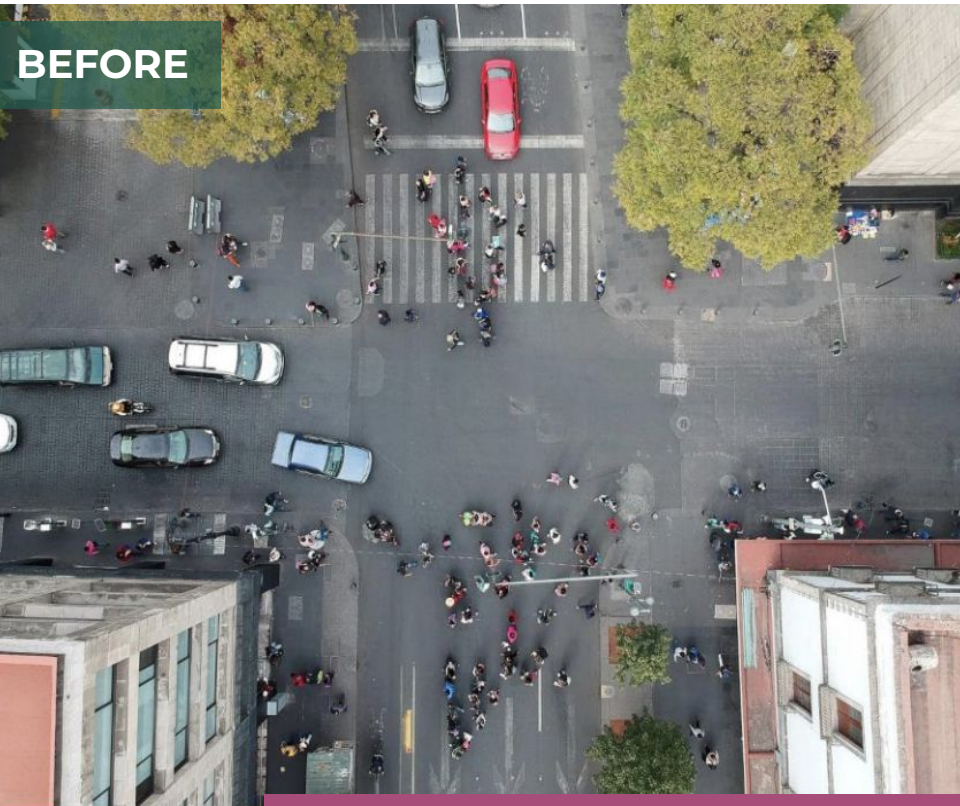
	Jan - Mar 2019	Jan - Mar 2020	Variation (%)
Road traffic crashes	72	54	-25%
Victims	90	61	-32%
Run overs	17	8	-53%

### Projects: Chapultepec, Hidalgo, Reforma, Ceylan (38 intersections)

	Jan - Mar 2019	Jan - Mar 2020	Variation (%)
Road traffic crashes	39	27	-31%
Victims	49	33	-33%
Run overs	10	8	-20%



# SAFE INTERSECTIONS



117 improved crosswalks - approx investment 1.5 million dollars



# SAFE INTERSECTIONS





# REMOVAL OF (ANTI)PEDESTRIAN BRIDGES

BEFORE



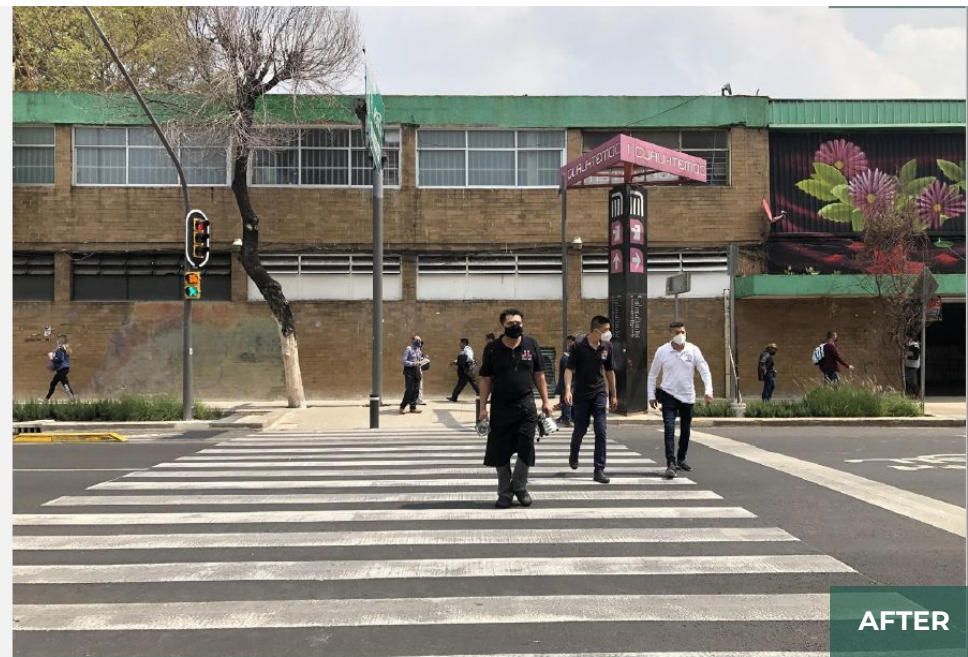
5 anti-pedestrian bridges **have been removed**

AFTER



Replaced with safe and accessible **pedestrian crossings**

# REMOVAL OF (ANTI)PEDESTRIAN BRIDGES





# ROAD RECONFIGURATIONS AND PACIFICATION



Av. Hidalgo / Av. Balderas / Av. Chapultepec



# ZÓCALO: PEDESTRIAN AREA EXTENSION



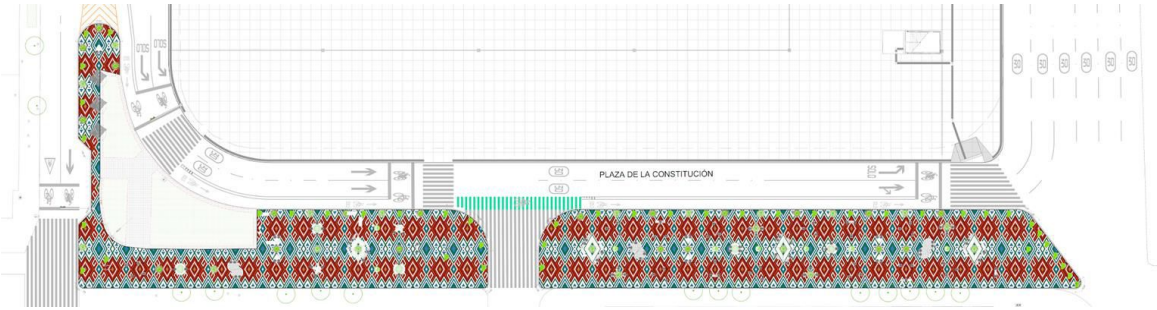
# ZÓCALO: PEDESTRIAN AREA EXTENSION



2020

**Area:** 2,963 m<sup>2</sup> / 3,544 yd<sup>2</sup> **Investment:** \$377 K

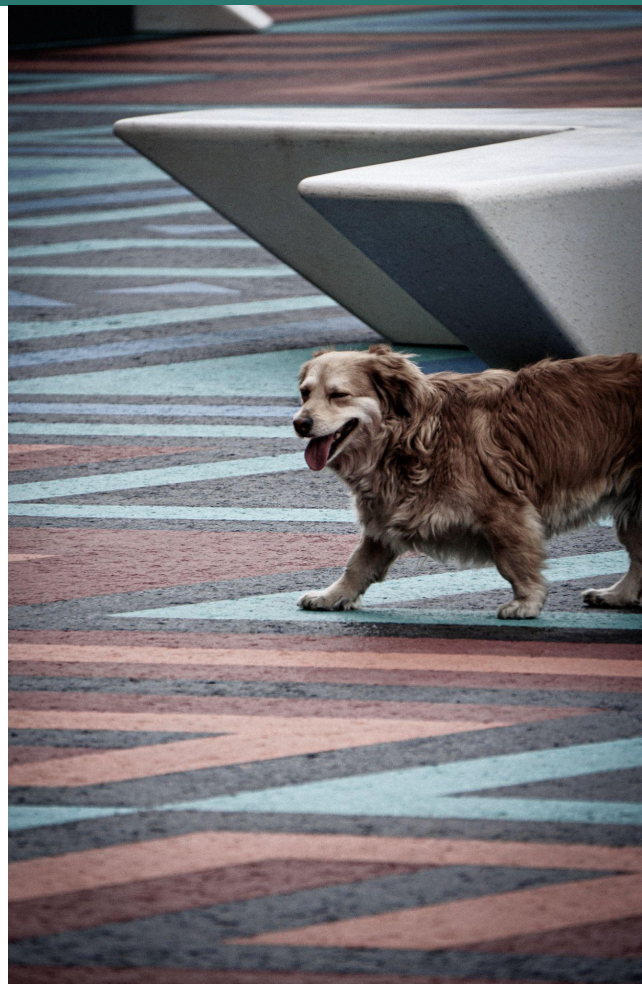
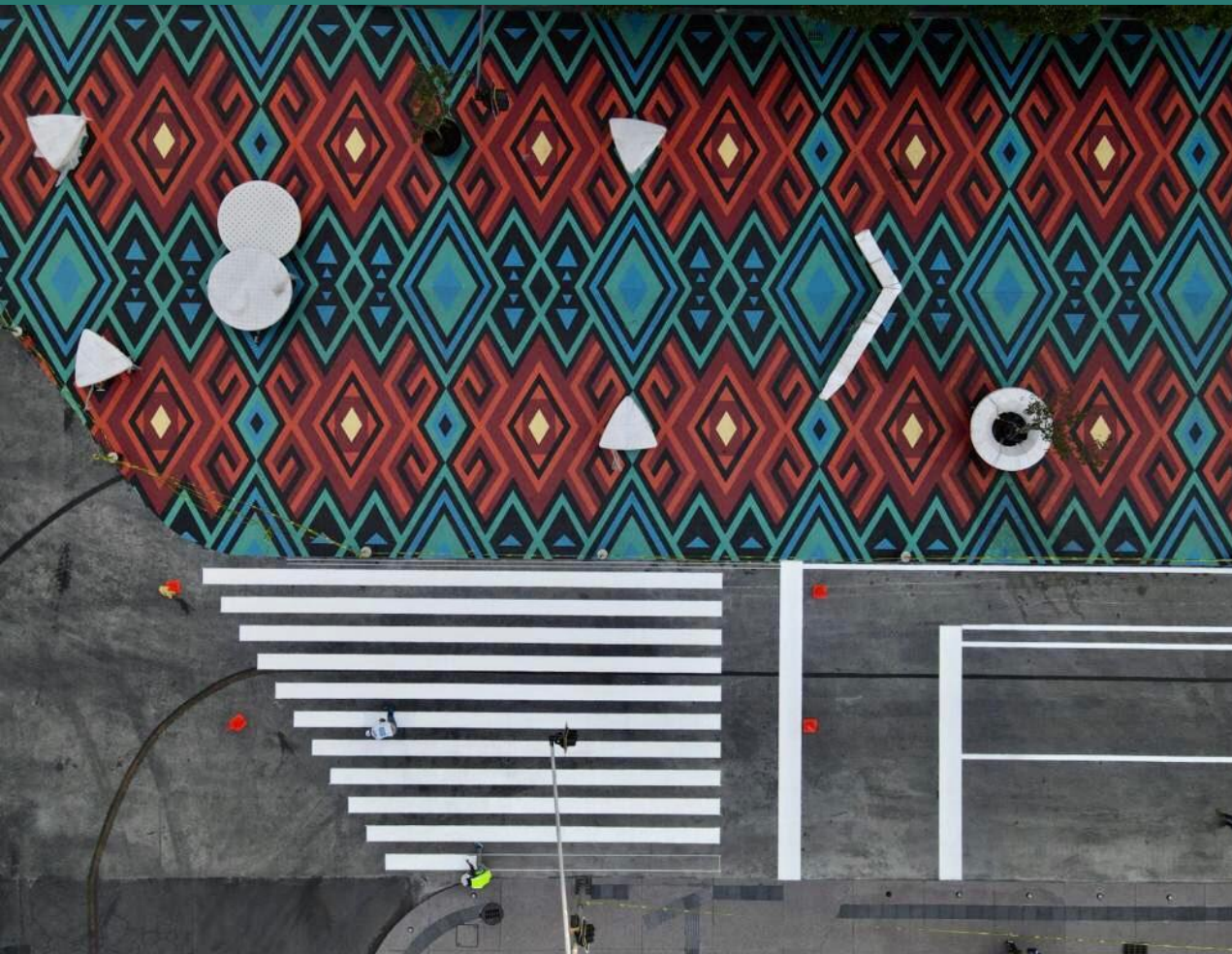
- Reconfiguration / reduction of vehicle lanes
- Public space intervention
- New areas of stay
- Incorporation of urban furniture
- Vegetation



2021

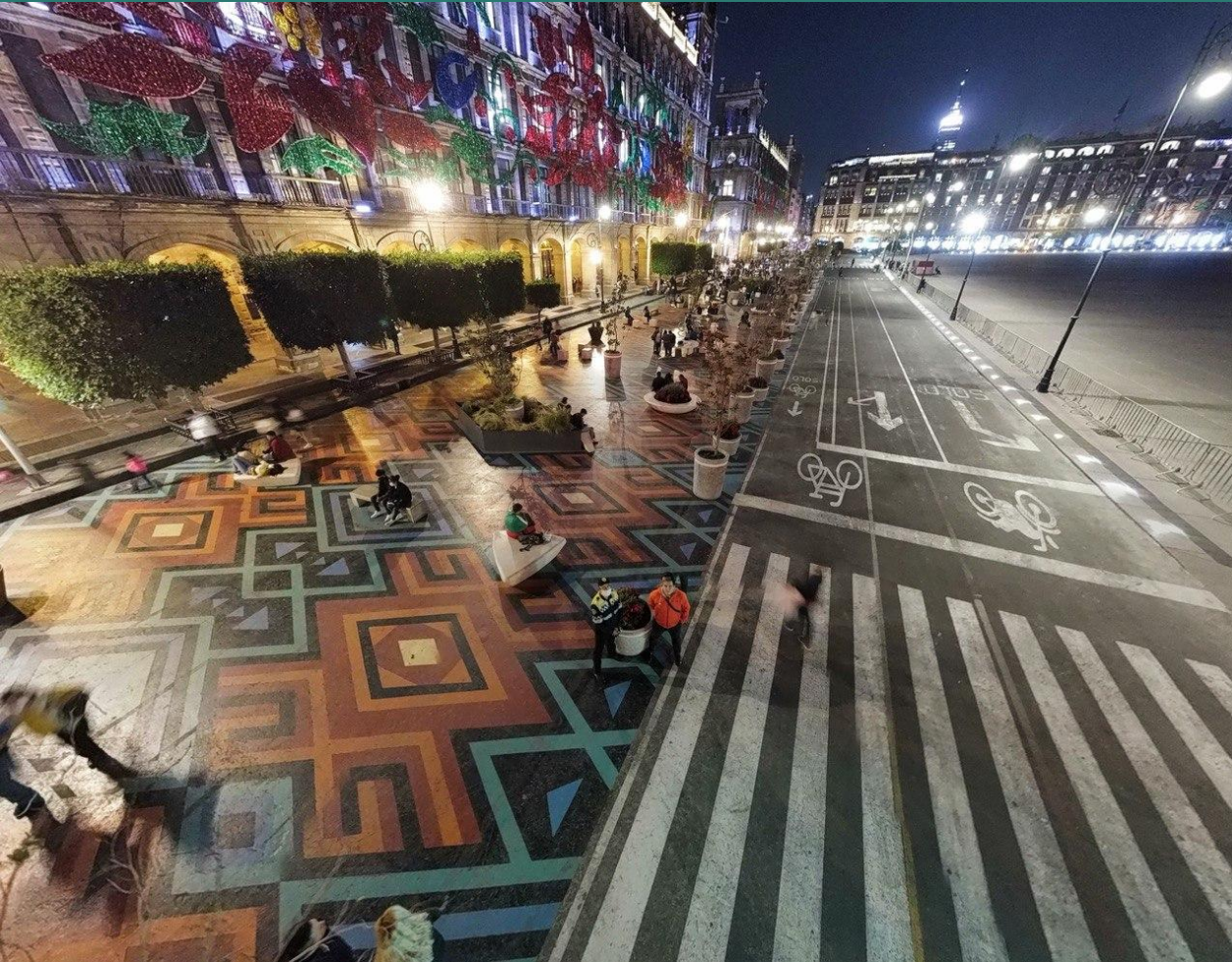


# ZÓCALO: PEDESTRIAN AREA EXTENSION






# ZÓCALO: PEDESTRIAN AREA EXTENSION





# WALK FREE, WALK SAFE

- Increase lighting
- Improve urban infrastructure
- Install surveillance cameras and emergency buttons

A woman with long dark hair, wearing a tan vest over a light-colored long-sleeved shirt, a dark skirt, and purple shoes, is walking on a wide, paved sidewalk at night. The sidewalk is illuminated by streetlights, and there are trees and bushes along the side. In the background, other pedestrians are visible further down the path. To the left of the woman, there is a green wall with vertical slats. To the right, there are traffic signs, including a 'No Left Turn' sign and a '60 Km/h' speed limit sign with the word 'MAXIMA' below it.

If a woman feels safe walking down the street, anyone else will feel safe



# SCHOOL ZONES



## Guía de **ENTORNOS ESCOLARES SEGUROS** para la CDMX



Descárgala en: <http://entornos escolares.centrico.mx>

- Development and publication of the **Safe School Environments Guide for CDMX**
- Workshops and delivery of the Guide to the 16 city halls
- Tactical urbanism intervention in school zones



# WALK & BIKE TO SCHOOL DAY



The Ministry of Mobility, the Iztapalapa Mayor's Office and the Ministry of Public Education, in coordination with the Institute for Transportation and Development Policy

- **Safe and healthy school environments**
- **Walking and cycling to access schools**
- **Physical activity in girls and boys**



# WALK & BIKE TO SCHOOL DAY



- Workshops with parents, school authorities and students
- Walks to their schools
- Graphic materials to support the program







# THANK YOU

**Constanza Delón**  
[arq.delon@gmail.com](mailto:arq.delon@gmail.com)



GOBIERNO DE LA  
CIUDAD DE MÉXICO

SECRETARÍA  
DE MOVILIDAD